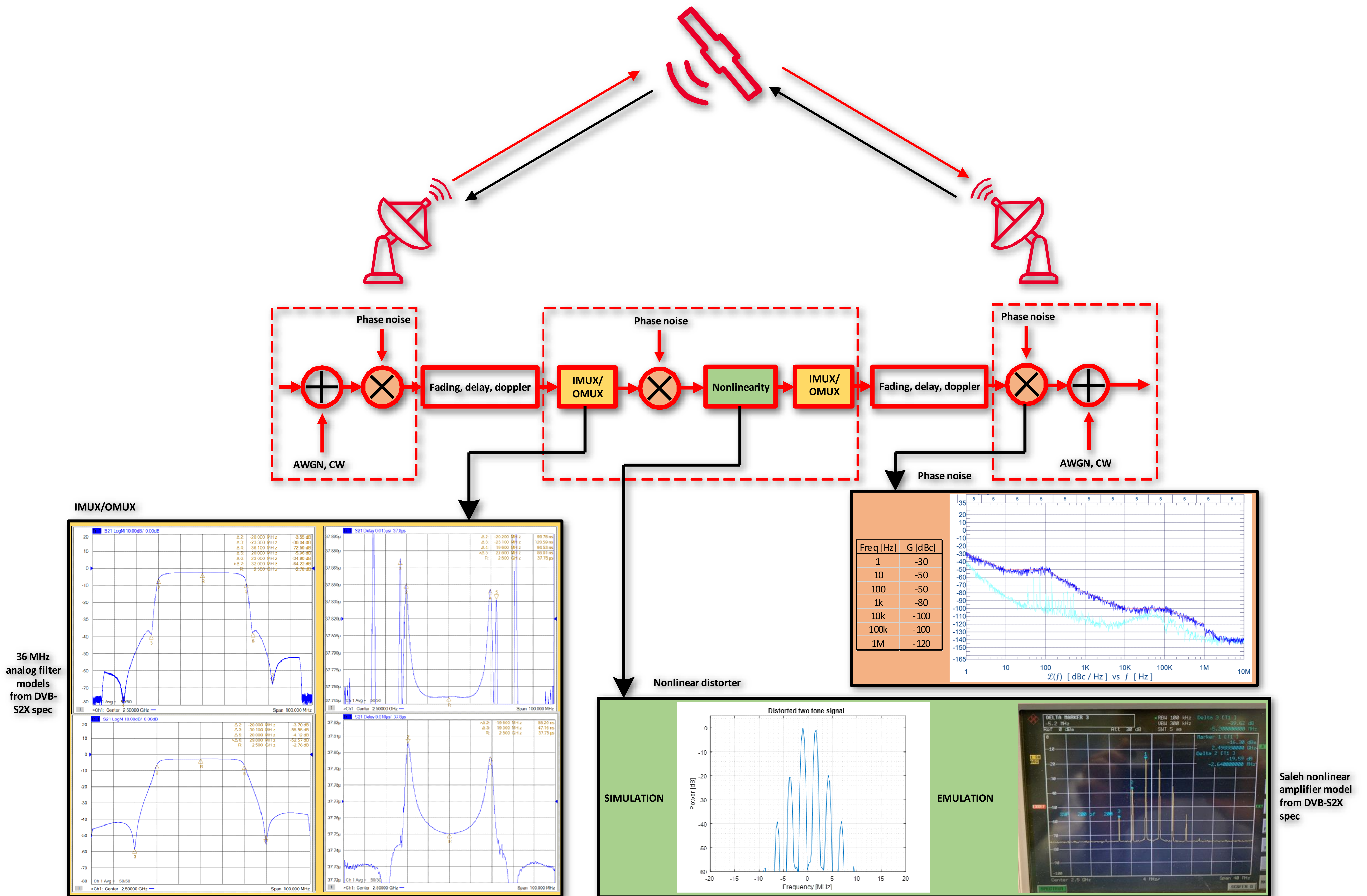


Keysight Technologies – RF Impairment emulation

Phase noise, nonlinear amplifier and multiplexer filter modelling and real-time emulation with radio channel emulator

❖ Keysight Technologies Finland Oy, Elektronikkatie 10, 90590 Oulu



PROPSIM F64/FS16 radio channel emulator

- Highest capacity on the market, 16 or 64 satellite links per unit
- Broad frequency range coverage
 - RF range: 3...7250 MHz
 - Can be extended with remote radio heads
- From 40 MHz up to 1600 MHz wideband channels
 - Fully cross connected signal routing
- For all Satellite use cases
 - Max Doppler ± 1.5 MHz
 - Max delay 1600ms

